



# ELEMENTARY - RESOURCES & OPPORTUNITIES - AUGUST 2016

## Elementary - Resources & Opportunities

### Elementary Single-Track Calendar Reporting Period/MiSiS

#### ELEMENTARY SINGLE-TRACK CALENDAR

|                      | Reporting Period Dates |           |             | MiSiS Grade Entry Window |            |                             |
|----------------------|------------------------|-----------|-------------|--------------------------|------------|-----------------------------|
|                      | Start Date             | End Date  | No. of Days | Start Date               | End Date   | Parent Conference Dates     |
| 1st Reporting Period | 8/16/2016              | 11/4/2016 | 55          | 10/20/2016               | 11/14/2016 | November 7-14, 2016         |
| 2nd Reporting Period | 11/7/2016              | 2/24/2017 | 57          | 2/9/2017                 | 3/3/2017   | February 27 – March 3, 2017 |
| 3rd Reporting Period | 2/27/2017              | 6/9/2017  | 68          | 5/18/2017                | 6/9/2017   | June 5-9, 2017 (Optional)   |
|                      |                        |           | Total Days  | 180                      |            |                             |

### Early Childhood Education - TK/ETK

#### •ETK Trainings

Training for teachers NEW to ETK; pedagogical and practical ideas for implementation. *August 8-10, 2016, 8-2:30p.m., Los Angeles Elementary School*

#### •TK and ETK Professional Development

Part II TK/ETK Early Literacy & Music Integration training. *August 11, 12 or 13 (1/2 day sessions only for those who attended Part I)*

Contact: Leti Puyol, [lourdes.puyol@lausd.net](mailto:lourdes.puyol@lausd.net) or ECED office (213) 241-0415

#### •English Language Arts

#### •DIBELS/IDEL/TRC assessment window dates for 2016-17

Beginning of the year: August 8-September 14 (IDEL until September 21)

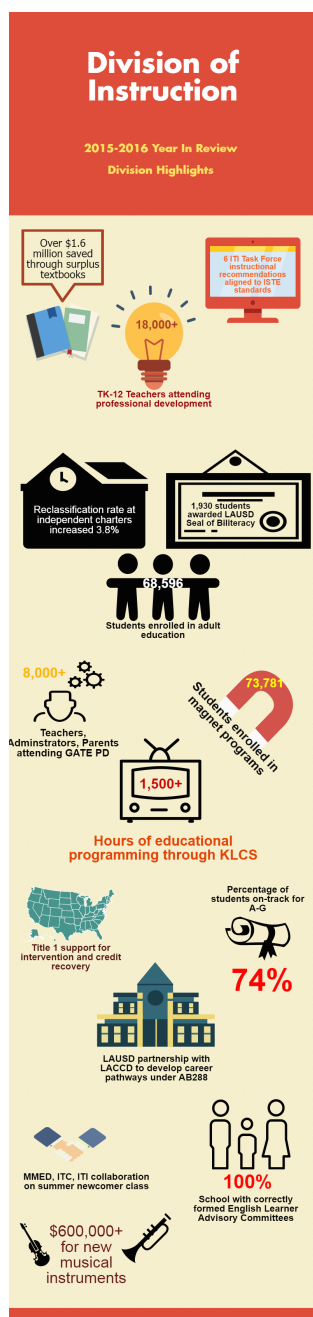
Middle of the year: November 28-February 3

End of the year: May 1-June 9

#### • Early Language and Literacy Plan - Cohorts 1&2

ELLP Cohorts 1 & 2 Designee and Principal Saturday meeting dates. *September 17, October 8, 2016; January 21, May 20, 2017. Locations in each LD*

ELLP Summer Symposium for Cohort 2 school teams of 5 only. August 4-6, 2016.



Contact: Theresa Wedaa, [theresa.wedaa@lausd.net](mailto:theresa.wedaa@lausd.net), (213) 241-5686 or Alison Pickering, [alison.pickering@lausd.net](mailto:alison.pickering@lausd.net), (213) 241-2494

- **Language! Tier 3 core replacement program and PD for Gr 4-5**

Outlines procedures for identifying students in need of Tier 3 instruction. *August 8-10, 2016, Virgil MS.*  
Contact [alison.pickering@lausd.net](mailto:alison.pickering@lausd.net)

---

## Mathematics

---

- **Elementary Math Online Course** - “Orchestrating the California Standards Math Classroom”

Three-hour online course in **MyPLN**

- **My Math**

Principals, assistant principals and out-of-the-classroom math support personnel can access the My Math Digital materials for multiple grades by using the updated [demo account](#)

User Name: **MHECAMATH**

Password: **CAMATH4Review**

Teachers will be using the Single Sign On, go [here](#).

Students will use the Single Sign On, go [here](#).

---

## History-Social Science

---

- **Reading, Writing and Inquiry: Part One.** NEW. Elementary teachers of grades 4-6 are invited to attend this PD opportunity which will focus on Disciplinary Literacy and an Introduction to Inquiry. *August 27, 2016, 8:00-3:00*, Location is to be determined. Registration will open August 1, 2016.

Grade 4 [Registration](#)

Grade 5/6 [Registration](#)

---

## Physical Education

---

- **Physical Education Teacher Itinerant Program (PETIP)**

PETIP is a two-year program that provides a physical education itinerant teacher one day a week to designated elementary schools to provide demonstration lessons with embedded PD.

Contact: Dr. Janice Collins, [janice.collins@lausd.net](mailto:janice.collins@lausd.net), (213) 241-4134

- **CAL200 Physical Education Instructional Minutes Monitoring Certification**

New online system for certifying elementary PE instructional minutes is now open in the Teacher and Principal Portals! Tutorials are available on the physical education webpage for guidance on using the online certification tool in both the [Teacher and Principal Portals](#).

## K-12 Resources and Events

---

### Integrated Library and Textbook Support Services

---

Begin planning now for these wonderful opportunities to celebrate reading and promote school libraries:

[Library Card Sign-up Month](#) - September 2016: September is Library Card Sign-Up Month - a time when the American Library Association and libraries across the country remind parents that the most important school supply of all is @ your library® - it's your library card.

[Banned Books Week](#) - September 26 - October 1, 2016: Banned Books Week, an annual celebration of the freedom to read since 1982, is observed the last week of September.

[Teen Read Week](#) - October 9-15, 2016: A national literacy initiative of the Young Adult Library Services Association that is aimed at teens, their parents, librarians, educators, booksellers and other concerned adults.

### KLCS - Highlights

---



**Keep Kids Learning Over the Summer!**  
**PBS Learning Media Resources**

Go to [www.klcs.org](http://www.klcs.org) for the latest educational programming information from KLCS

#### **Principals Summer Institute**

June 14, 2016 session [rebroadcast](#)

June 17, 2016 session [rebroadcast](#)

#### **Superintendent's Annual Meeting Broadcasts on KLCS:**

August 9, 9:00 a.m. (live)

August 9, 5:00 p.m. (rebroadcast)

August 14, 7:00 a.m. (rebroadcast)

#### **PBS Learning Media Tools for Teachers at [pbslearningnmedia.org](http://pbslearningnmedia.org):**

##### Productivity Tools for Teachers

Digital productivity tools make it easier than ever for students to connect with curriculum concepts. The Lesson Builder, Quiz Maker and Storyboard tools offer dynamic opportunities to personalize learning experiences while targeting a range of learning styles.

#### **LAUSD Stories:**

- [Alta Loma Parent Center Improvements](#)
- [Dorsey HS Parent Center Improvements](#)
- [Zero Dropouts Summit](#)

- [Diploma Signing Ceremony](#)
- [Carmen Lomas Garza 10th Anniversary Naming Ceremony](#)
- [Families Matter](#): Partnerships for Student Success
- [La Famiila Importa](#): Alianzas para el exito estudiantil

## **Mastery Learning and Grading**

---

For the 2016-17 school year, we are pleased to offer support both to Phase One schools interested in beginning this transformative journey with our blended learning professional development series and to Phase Two schools who have already completed the PD series and are now working on implementation.

Contact Melissa Guice [mjg7290@lausd.net](mailto:mjg7290@lausd.net), (213) 241-8707 or Chris Grounds [christopher.grounds@lausd.net](mailto:christopher.grounds@lausd.net), (213) 241-0648

## **Student Integration Services – Magnet Program**

---

- **Annual Magnet Meeting**

The Annual Magnet Meeting for principals and coordinators will be held on *August 4, 2016, Thursday, 8:00 – 11:30 a.m., Hamilton High School.*

## **District Assessment Calendar 2016-17**

---

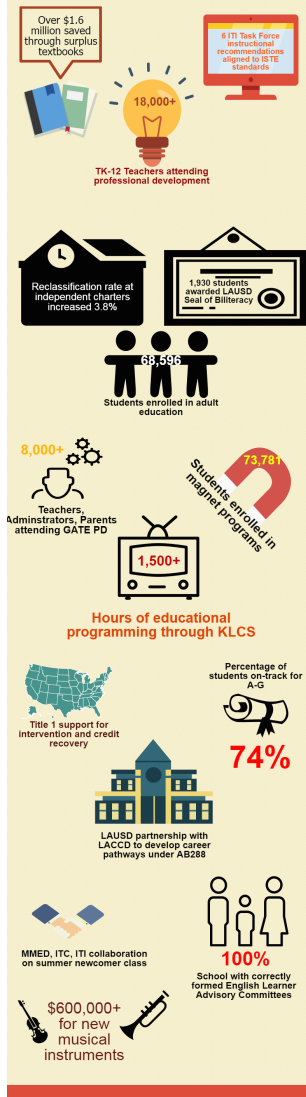
**District Assessment Calendar 2016-17 ([click here](#) for calendar)**



# SECONDARY - RESOURCES & OPPORTUNITIES - AUGUST 2016

## Division of Instruction

2015-2016 Year In Review  
Division Highlights



## Secondary - Resources & Opportunities

### District Assessment Calendar 2016-17

#### A. The dates for the fall semester mark reports are as follows:

| Single Track<br>Fall Semester | MiSiS Mark Reporting Window |            |
|-------------------------------|-----------------------------|------------|
|                               | First Day                   | Last Day   |
| Optional Progress Report      | 9/1/2016                    | 9/9/2016   |
| Midterm Mark Report           | 10/6/2016                   | 10/14/2016 |
| Progress Report               | 11/3/2016                   | 11/14/2016 |
| Final Mark Report             | 12/8/2016                   | 12/16/2016 |

#### B. The dates for the spring semester mark reports are as follows:

| Single Track<br>Spring Semester | MiSiS Mark Reporting Window |           |
|---------------------------------|-----------------------------|-----------|
|                                 | First Day                   | Last Day  |
| Optional Progress Report        | 2/2/2017                    | 2/10/2017 |
| Midterm Mark Report             | 3/9/2017                    | 3/17/2017 |
| Progress Report                 | 4/20/2017                   | 4/28/2017 |
| Final Mark Report               | 5/18/2017                   | 6/9/2017  |

## Mathematics

### •California Math

This training will focus exclusively on the digital resources available through the publisher.

Locations, times, and registration information can be found via the [flyer](#) posted on the [math website](#)

### •New Teacher Textbook Training (High School)

Two-day textbook training for teachers assigned to Algebra 1, Geometry or Algebra 2 and are new to the program. Training will be offered for CPM, Springboard and Big Ideas. *August 10-11, 2016.*

For more information, please see the [flyer](#) posted on the [math website](#)

## History-Social Science

---

- **Ethnic Studies Professional Development**

Any teacher with at least one section of the one-semester Ethnic Studies course must enroll in and complete a mandatory online professional development prior to Norm Day of the 2016 - 2017 school year. Teachers will register for and complete the training in [MyPLN](#).

Contact Kieley Jackson, [kjack2@lausd.net](mailto:kjack2@lausd.net) (213) 241-4506

## Science

---

- **California Next Generation Science Standards Framework- Public Review 2**

The draft framework has been posted on the California Department of Education [Science Curriculum Frameworks Web page](#). Members of the public may send comments on the draft *CA Science Framework* directly by e-mail to [scienceframework@cde.ca.gov](mailto:scienceframework@cde.ca.gov). The current comment period will remain open until August 29, 2016.

## Literacy/English Language Arts

---

- **Re-Imagining ELA/ELD Instructional Design**

For those teachers and support staff who attended, the June training sessions for the newly selected middle school textbook tools, there will be a one-day follow-up session on *September 17, 2016*.

Registration link will be available in [MyPLN](#) after July 25, 2016.

## Linked Learning - Upcoming Opportunities

---

Linked Learning is conducting a four day Summer Institute, *August 1-4, 2016, 8:30-3:00, RFK Community Schools campus*. Register [here](#).

Linked Learning will be holding information sessions in August and September for schools interested in learning more about the Linked Learning approach to education, and the process of applying to become a LAUSD Linked Learning pathway. The session flyer with dates, times and meeting locations can be found [here](#). Contact Tiffany Spellman at [tab3028@lausd.net](mailto:tab3028@lausd.net) for more information.

Linked Learning is working in partnership with California State University, Los Angeles to offer teachers a blended learning program to learn more about the development and implementation of Linked Learning. Additional information can be found [here](#).

## K-12 Resources and Events

---

### Integrated Library and Textbook Support Services

---

Begin planning now for these wonderful opportunities to celebrate reading and promote school libraries:

[Library Card Sign-up Month](#) - September 2016: September is Library Card Sign-Up Month - a time when the American Library Association and libraries across the country remind parents that the most important school supply of all is @ your library® - it's your library card.

[Banned Books Week](#) - September 26 - October 1, 2016: Banned Books Week, an annual celebration of the freedom to read since 1982, is observed the last week of September.

[Teen Read Week](#) - October 9-15, 2016: A national literacy initiative of the Young Adult Library Services Association that is aimed at teens, their parents, librarians, educators, booksellers and other concerned adults.

### KLCS - Highlights

---



**Keep Kids Learning Over the Summer!**  
**PBS Learning Media Resources**

Go to [www.klcs.org](http://www.klcs.org) for the latest educational programming information from KLCS

#### Principals Summer Institute

June 14, 2016 session [rebroadcast](#)

June 17, 2016 session [rebroadcast](#)

#### Superintendent's Annual Meeting Broadcasts on KLCS:

August 9, 9:00 a.m. (live)

August 9, 5:00 p.m. (rebroadcast)

August 14, 7:00 a.m. (rebroadcast)

#### PBS Learning Media Tools for Teachers at [pbslearningmedia.org](http://pbslearningmedia.org):

[Productivity Tools for Teachers](#)

Digital productivity tools make it easier than ever for students to connect with curriculum concepts. The Lesson Builder, Quiz Maker and Storyboard tools offer dynamic opportunities to personalize learning experiences while targeting a range of learning styles.

#### LAUSD Stories:

- [Alta Loma Parent Center Improvements](#)
- [Dorsey HS Parent Center Improvements](#)
- [Zero Dropouts Summit](#)
- [Diploma Signing Ceremony](#)
- [Carmen Lomas Garza 10th Anniversary Naming Ceremony](#)

- [Families Matter](#): Partnerships for Student Success
- [La Famiila Importa](#): Alianzas para el exito estudiantil

---

## **Mastery Learning and Grading**

---

For the 2016-17 school year, we are pleased to offer support both to Phase One schools interested in beginning this transformative journey with our blended learning professional development series and to Phase Two schools who have already completed the PD series and are now working on implementation.

Contact Melissa Guice [mjg7290@lausd.net](mailto:mjg7290@lausd.net), (213) 241-8707 or Chris Grounds [christopher.grounds@lausd.net](mailto:christopher.grounds@lausd.net), (213) 241-0648

---

## **Student Integration Services – Magnet Program**

---

- **Annual Magnet Meeting**

The Annual Magnet Meeting for principals and coordinators will be held on *August 4, 2016, Thursday, 8:00 – 11:30 a.m., Hamilton High School.*

---

## **Dates for Required Reports of Marks in Secondary Schools 2016-17**

---

Dates for Required Reports of Marks in Secondary Schools 2016-17 ([click here](#))